

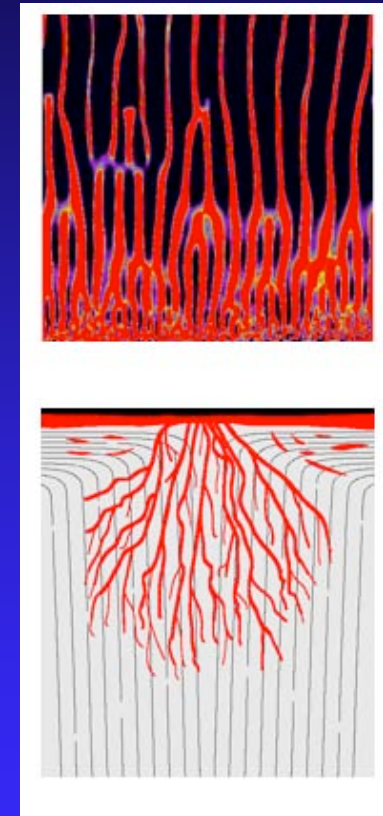
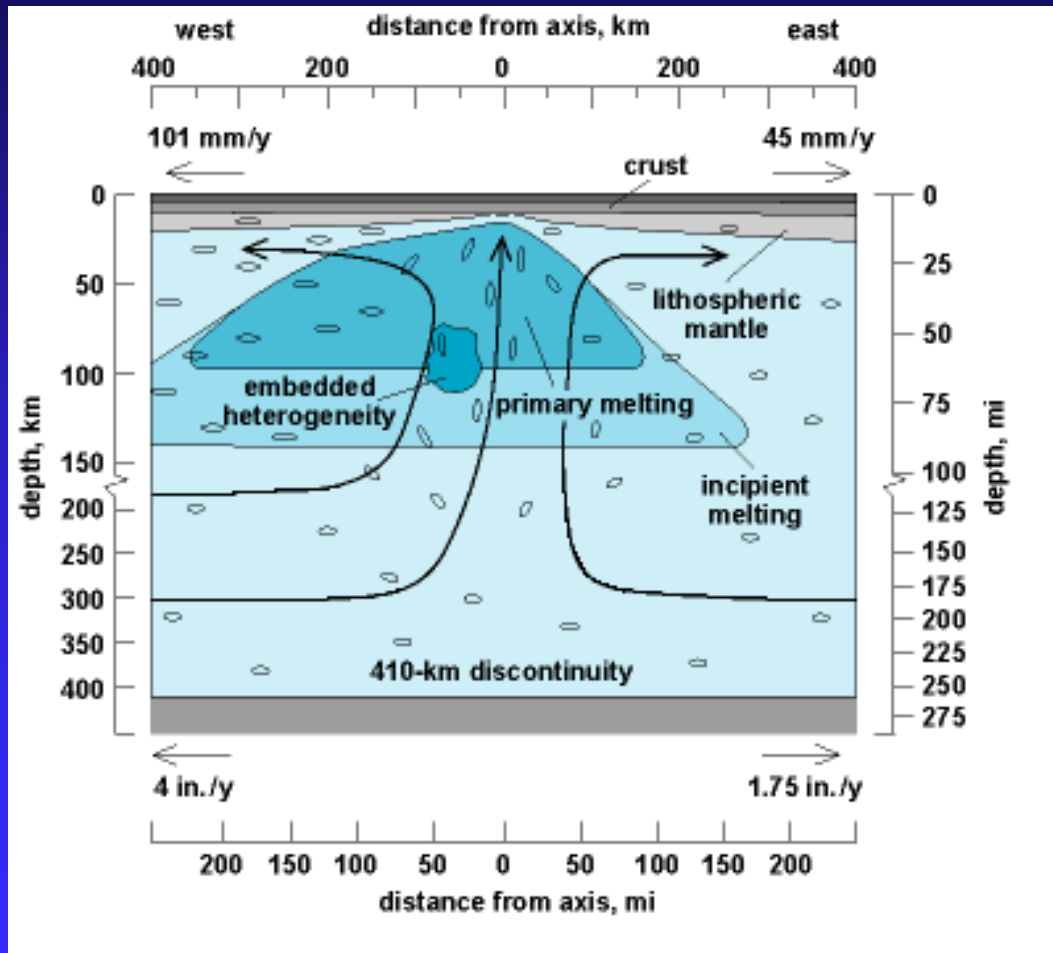
An aerial photograph of a mid-ocean ridge, showing a central rift valley with a dark, narrow channel. The surrounding seafloor is covered in brownish, textured sediment. The ridge runs diagonally from the top left towards the bottom right.

Magmatic processes at Mid-Ocean Ridges: Insights from a recently erupting segment of the East Pacific Rise

Suzanne Carbotte¹, Helene Carton¹,
Milena Marjanovic, Shuoshuo Han,
Vicki Ferrini¹, Pablo Canales², Mike
Perfit³, John Mutter¹, Mladen
Nedimovic¹, ¹LDEO, ²WHOI, ³UFFlorida

Mantle melting

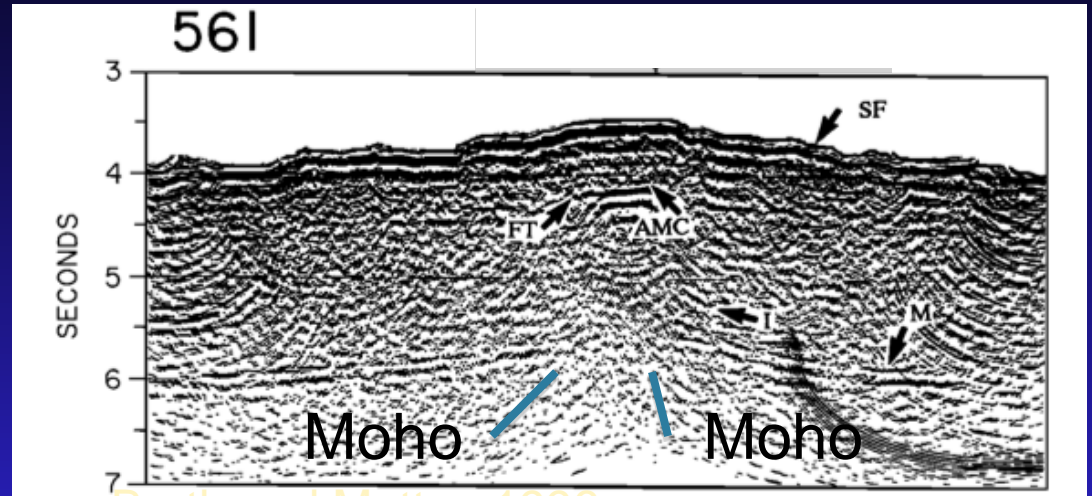
Melt migration



Kelemen et al., 1995
Spiegelman et al., 2000

MELT science team, Science, 1998

Crust fully formed
at axis requires
focused mantle
melt delivery



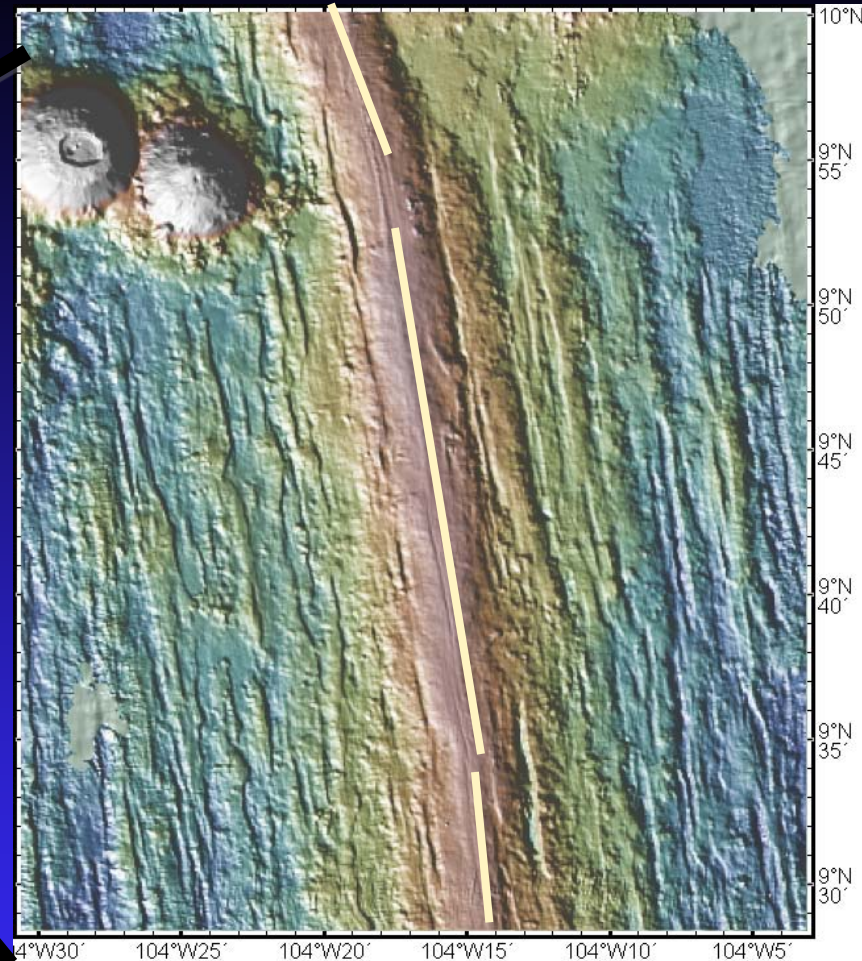
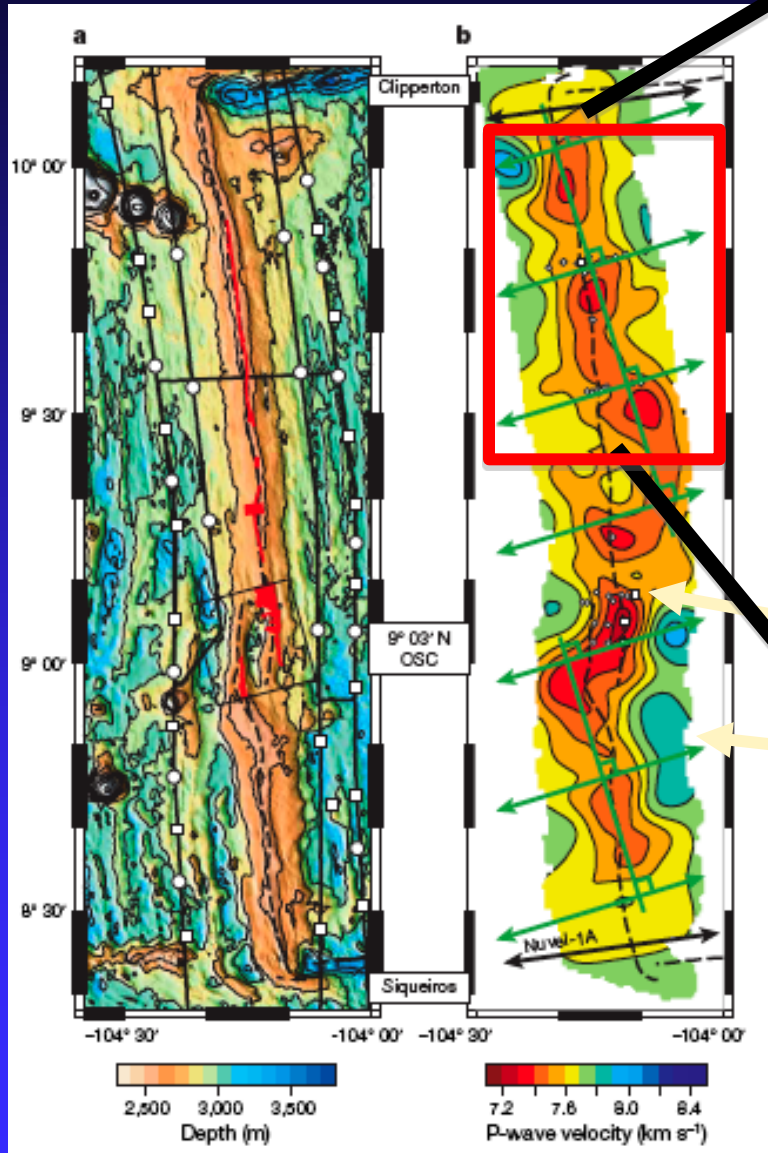
Barth and Mutter, 1996

Melt focusing
via channels at
LAB (e.g. Sparks
and Parmentier,
1991)



Holtzman et al., 2005

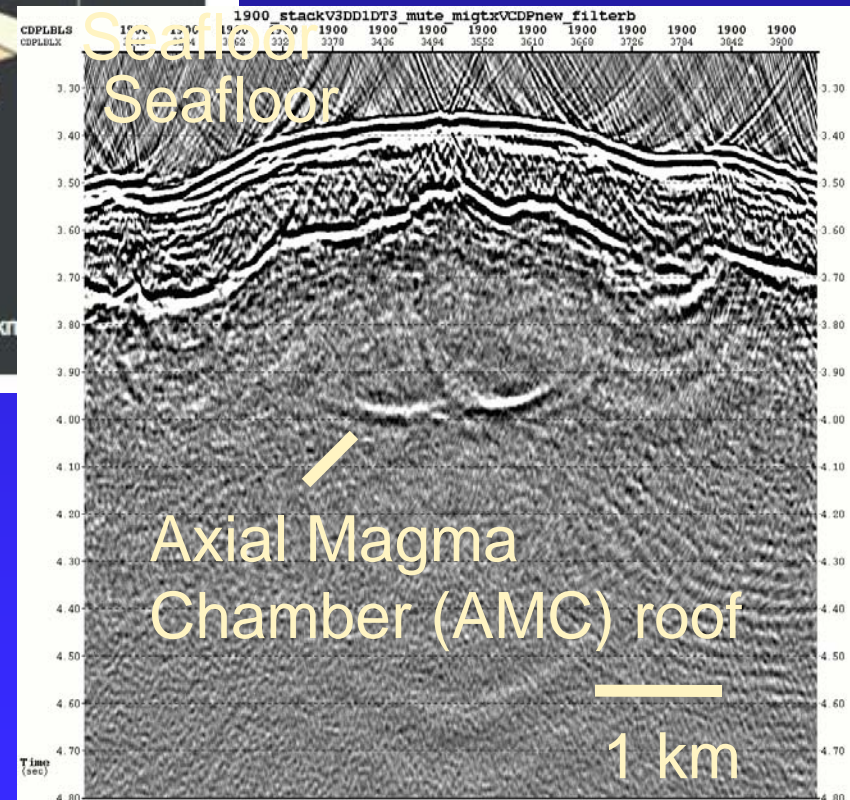
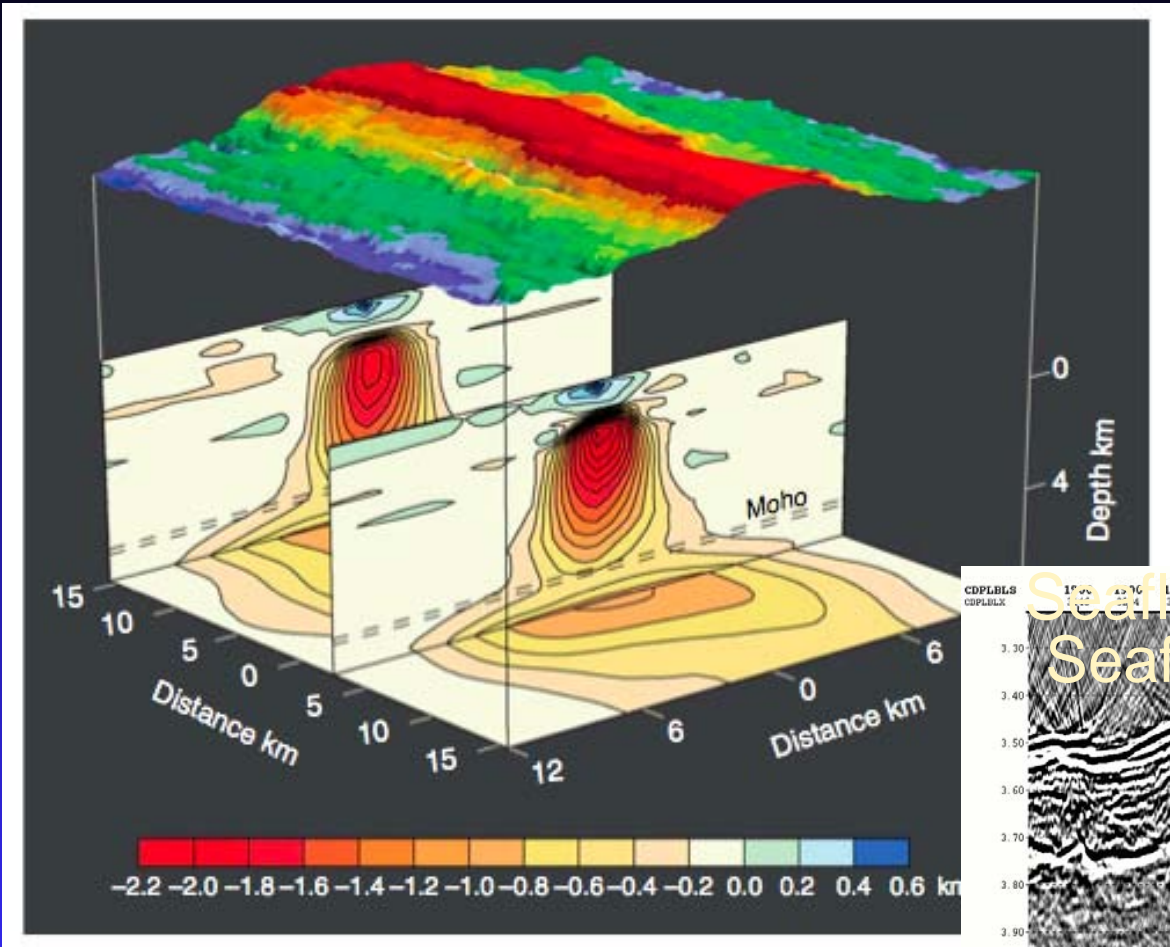
Uppermost Mantle Melt



- Segmentation of mantle melt at base of crust spaced ~ 30 km
- Persists – 10^5 to 10^6 yrs

Toomey et al., 2007

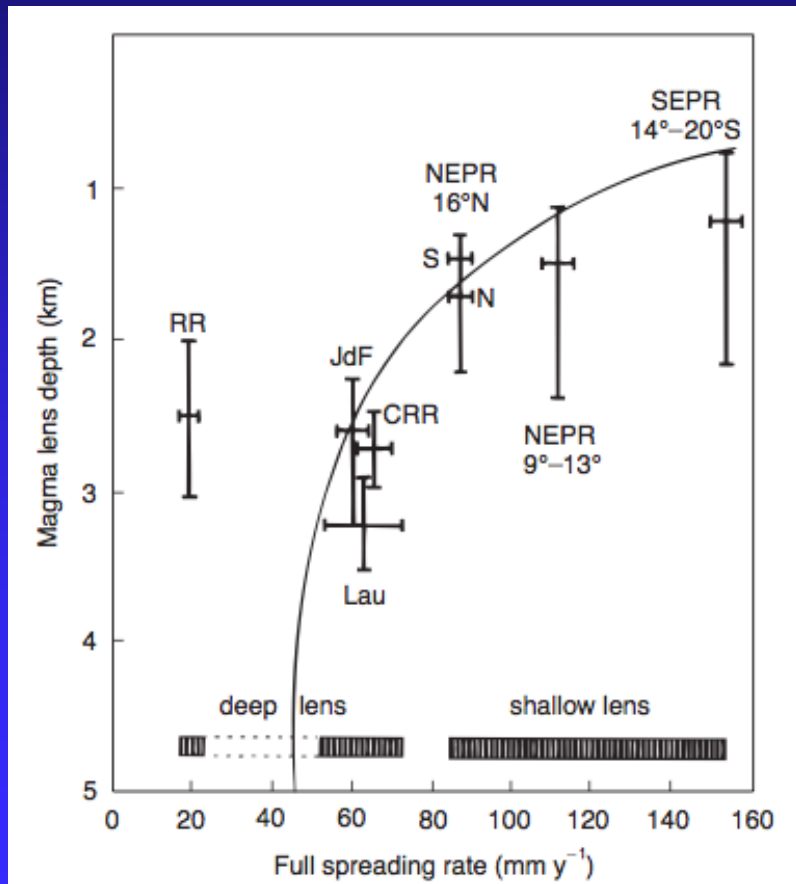
Melt distribution in the crust



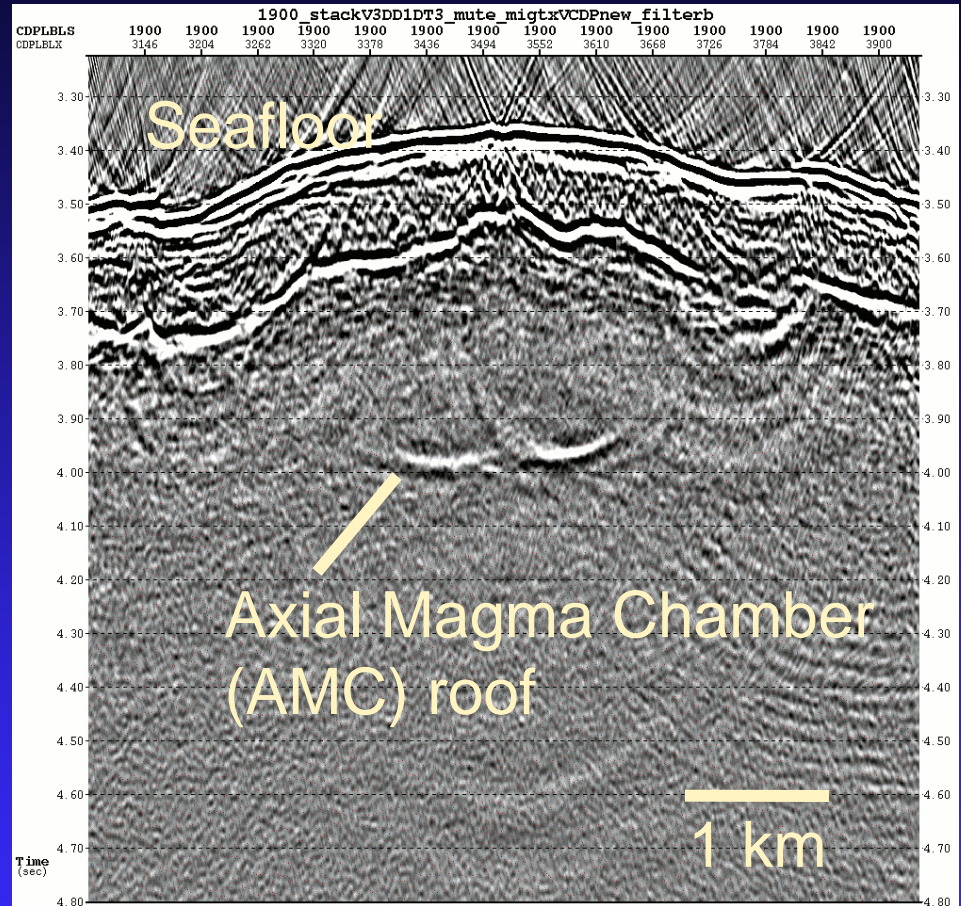
Dunn et al., 2000

Axial magma lens

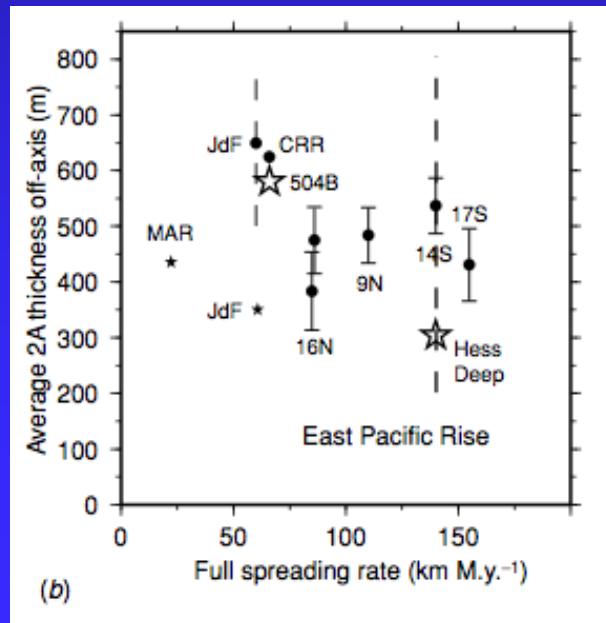
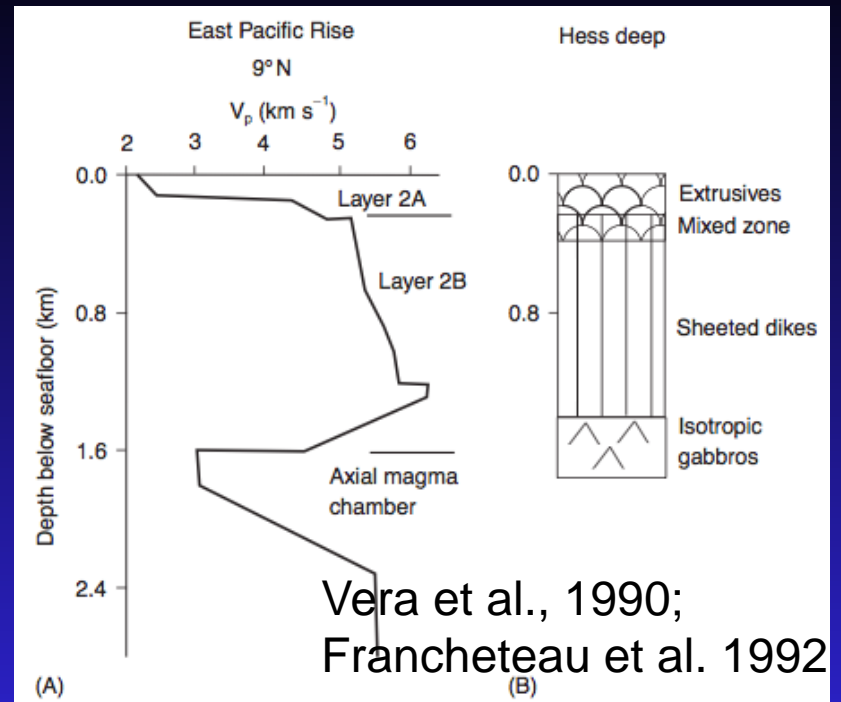
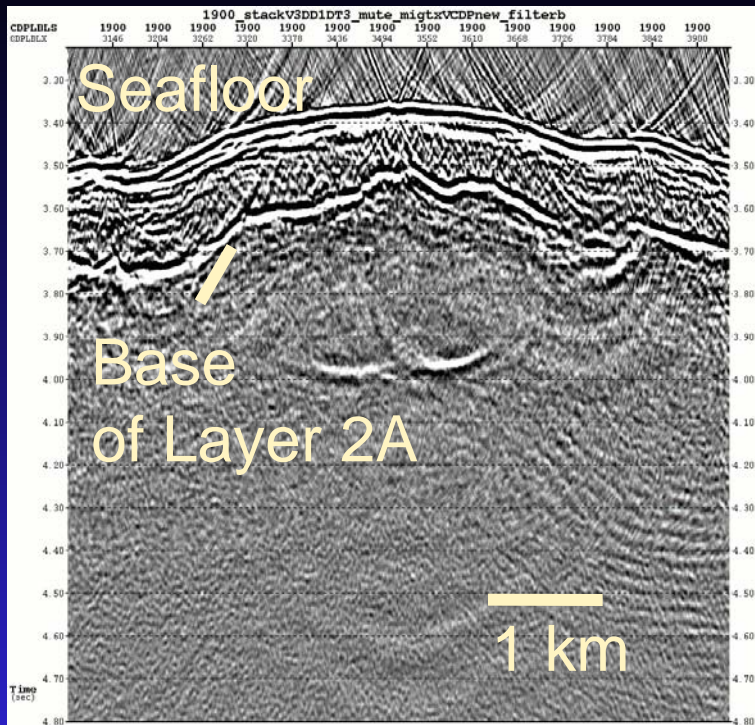
- 10's of kilometers
- ~500m-4.5 km wide,
- 10's of meters thick



Modified from Purdy et al., 1991

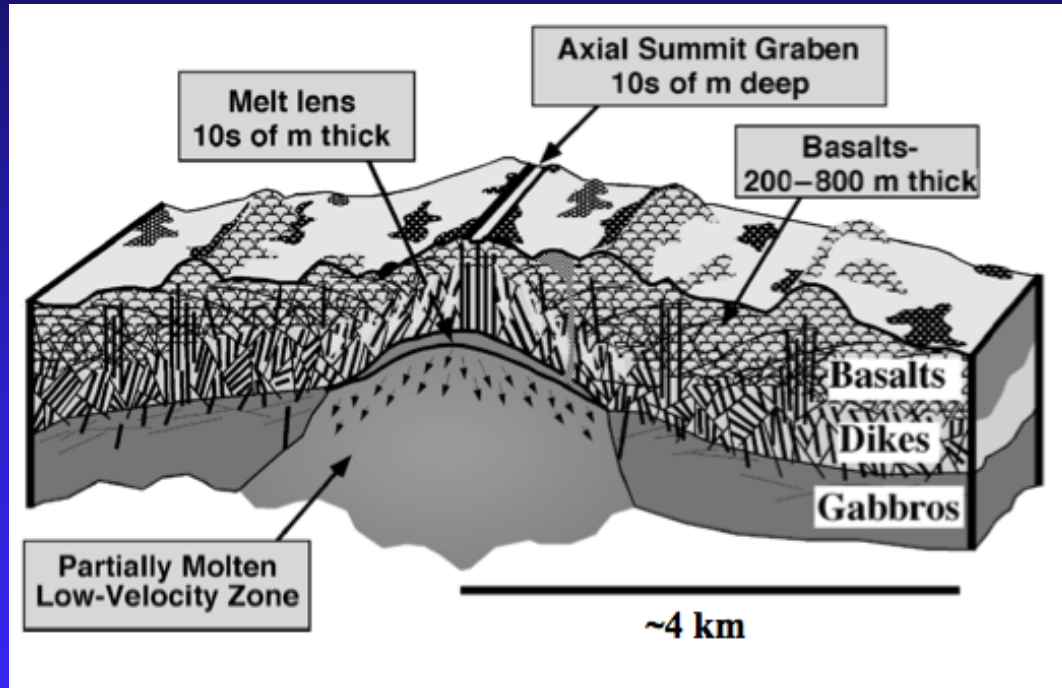


- Variations in depth with spreading rate (magma supply) 1.2 to >4 km depth



Upper Crust

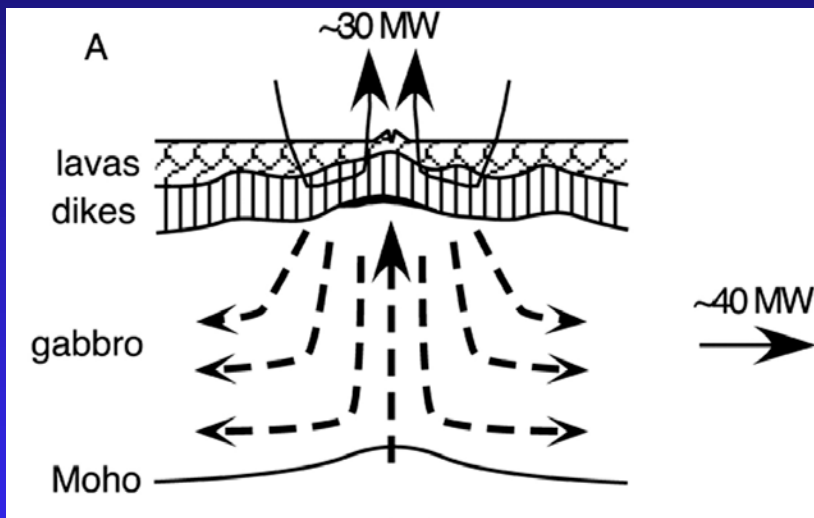
Formation of the Upper Crust



Karson et al., 2002

Formation of the lower crust

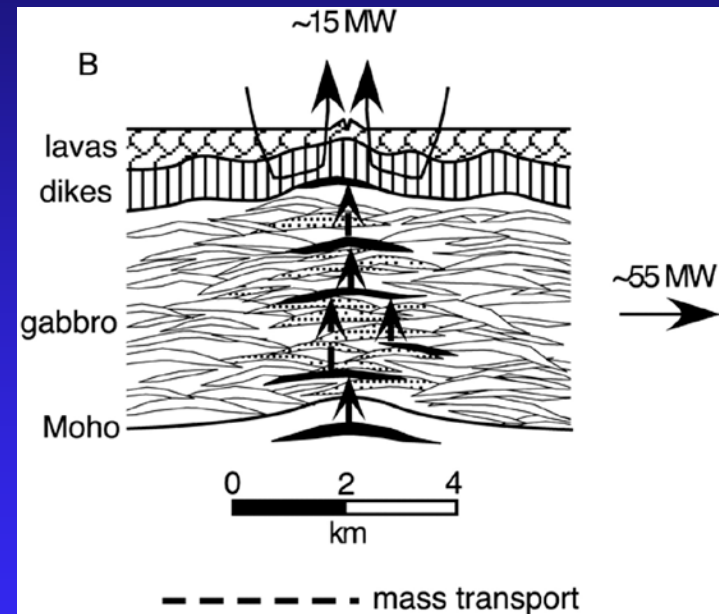
Gabbro glacier



Phipps Morgan and
Chen 1993;
Henstock et al., 1993

Seismic Observations

Sheeted sills



Kelemen et al., 1995

Ophiolite Observations

Current research

- How do MOR magmatic systems evolve and on what time scales?
- How long do mid-crustal magma sills persist? Frequency and processes of replenishment?
- What triggers volcanic eruptions? Mantle melt injection events? Tectonic stress?
- Dynamics of dike propagation.
- Are magma sills present in lower crust on-axis?