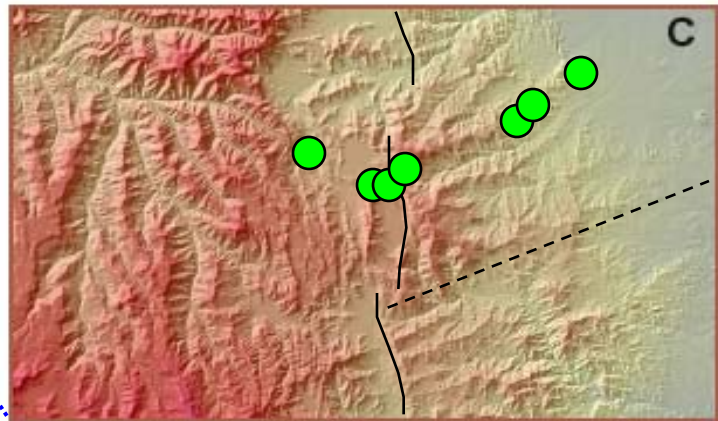
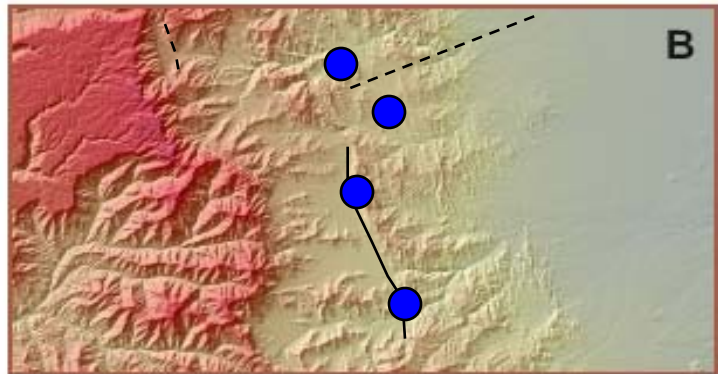
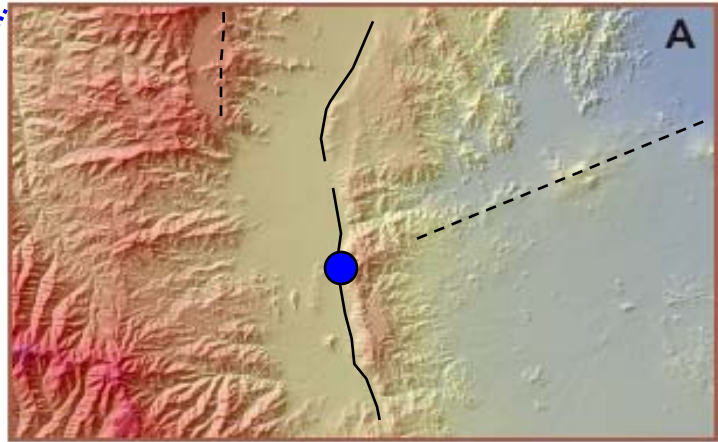
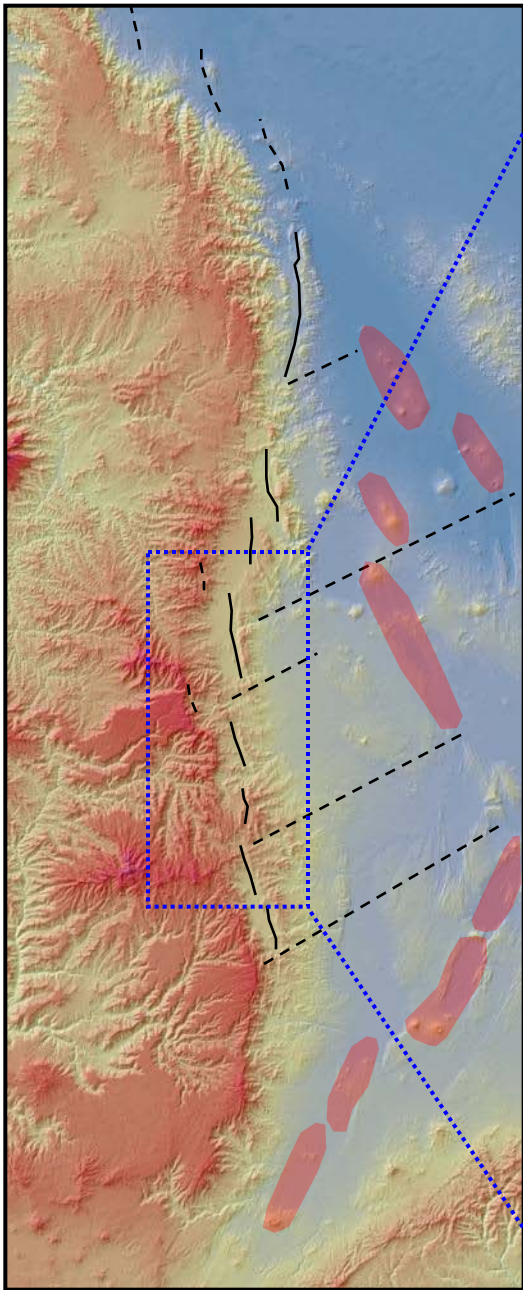


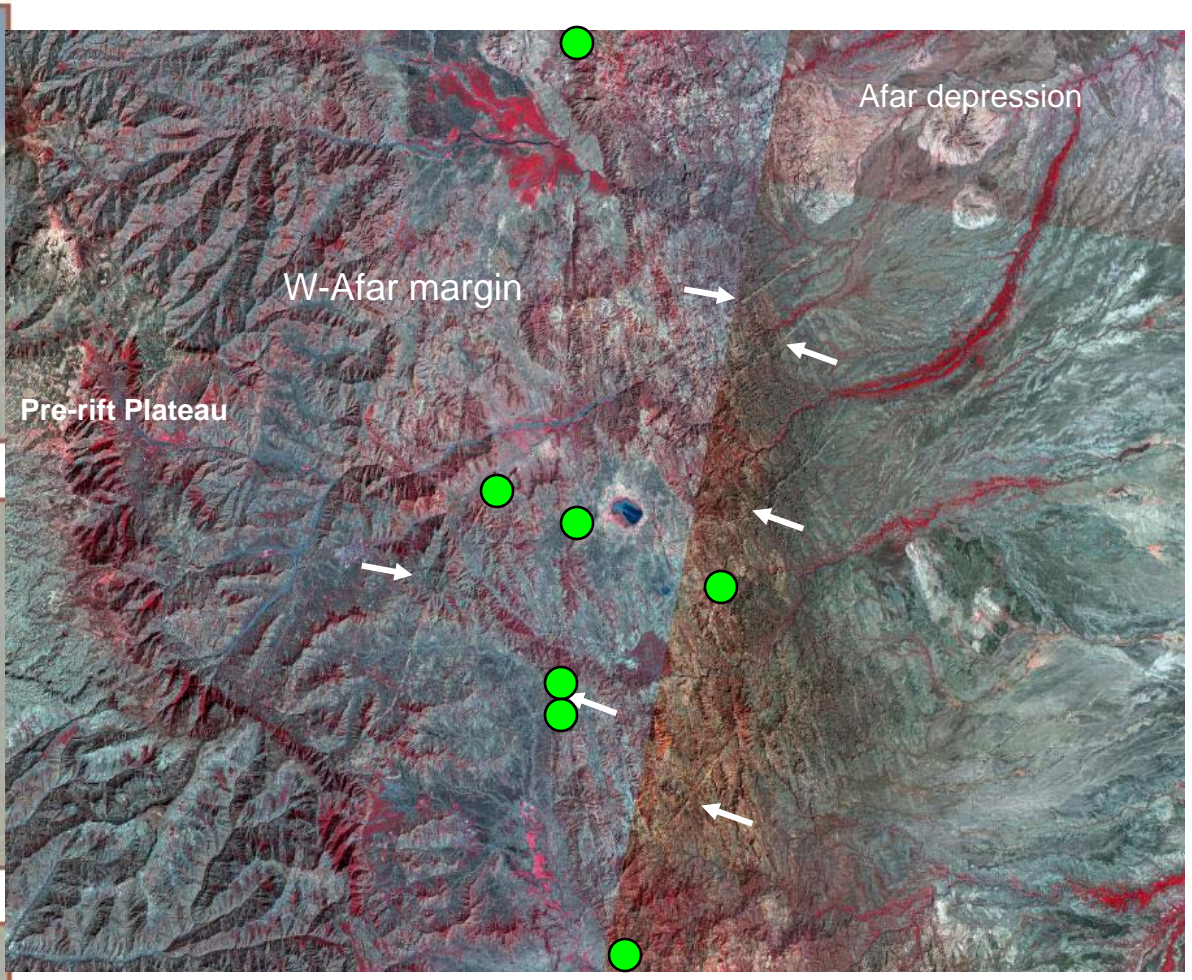
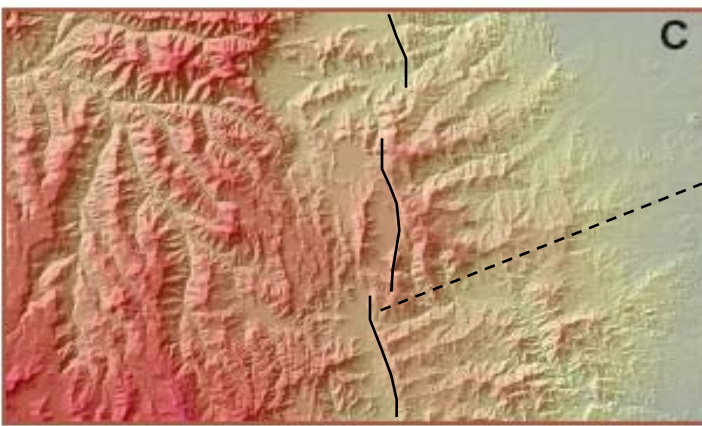
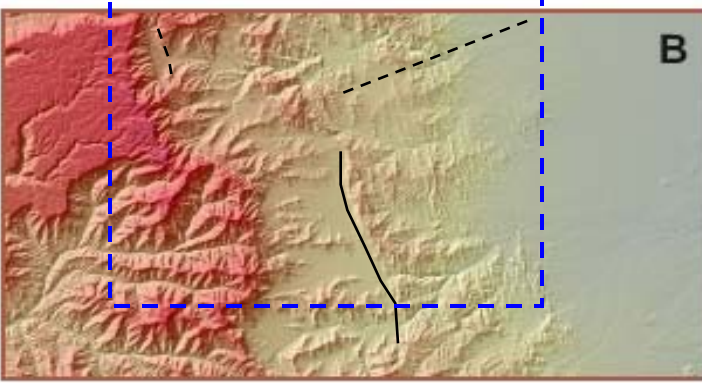
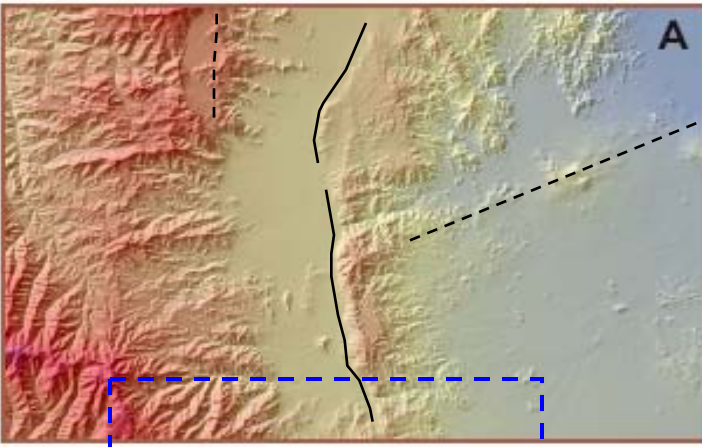
Magma evolution during the course of extension along a segment of the West Afar margin (Ethiopia)

Dereje Ayalew¹, Raphael Pik²

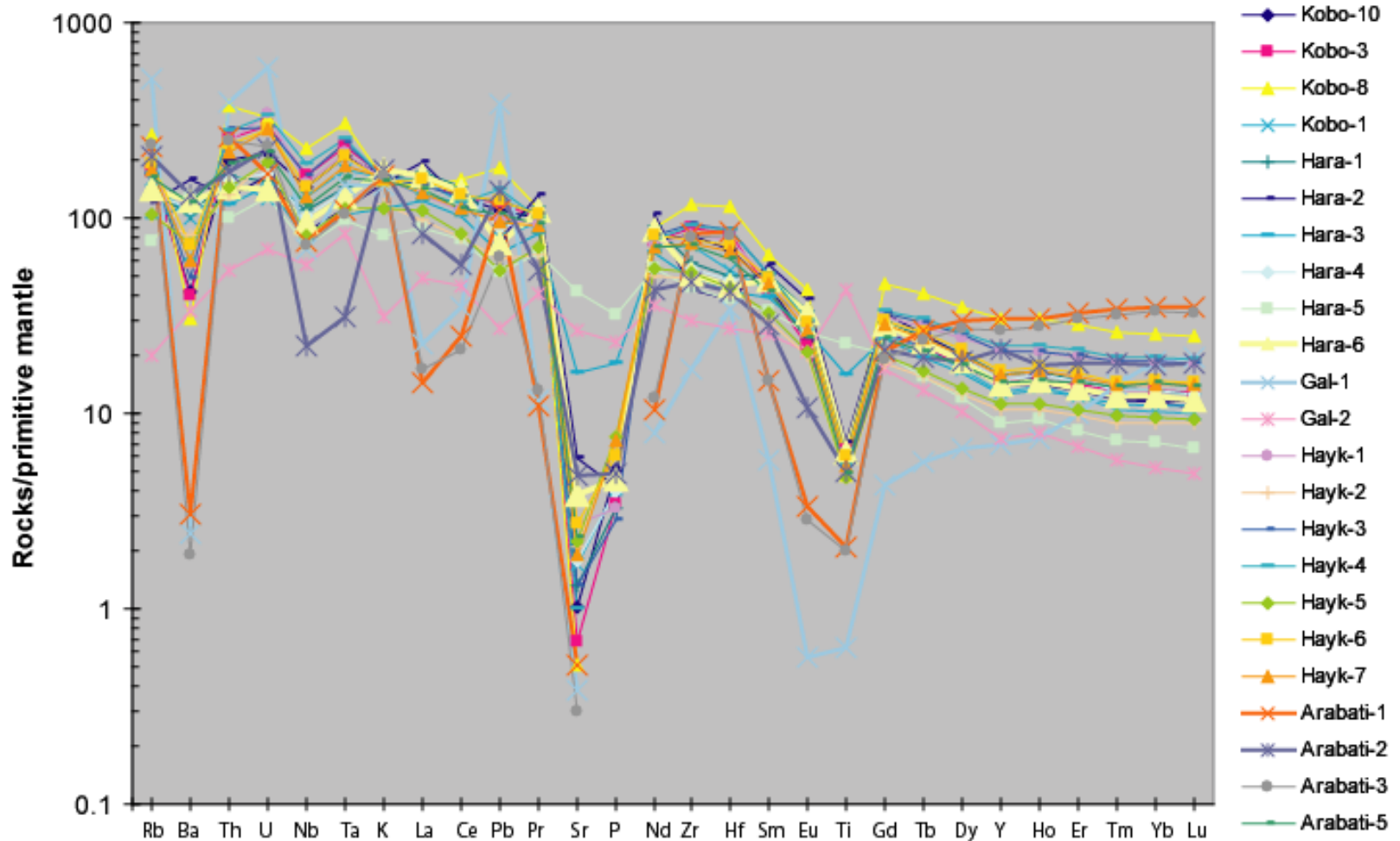
¹Department of Earth Sciences, Addis Ababa University

²CRPG-CNRS, Nancy, France

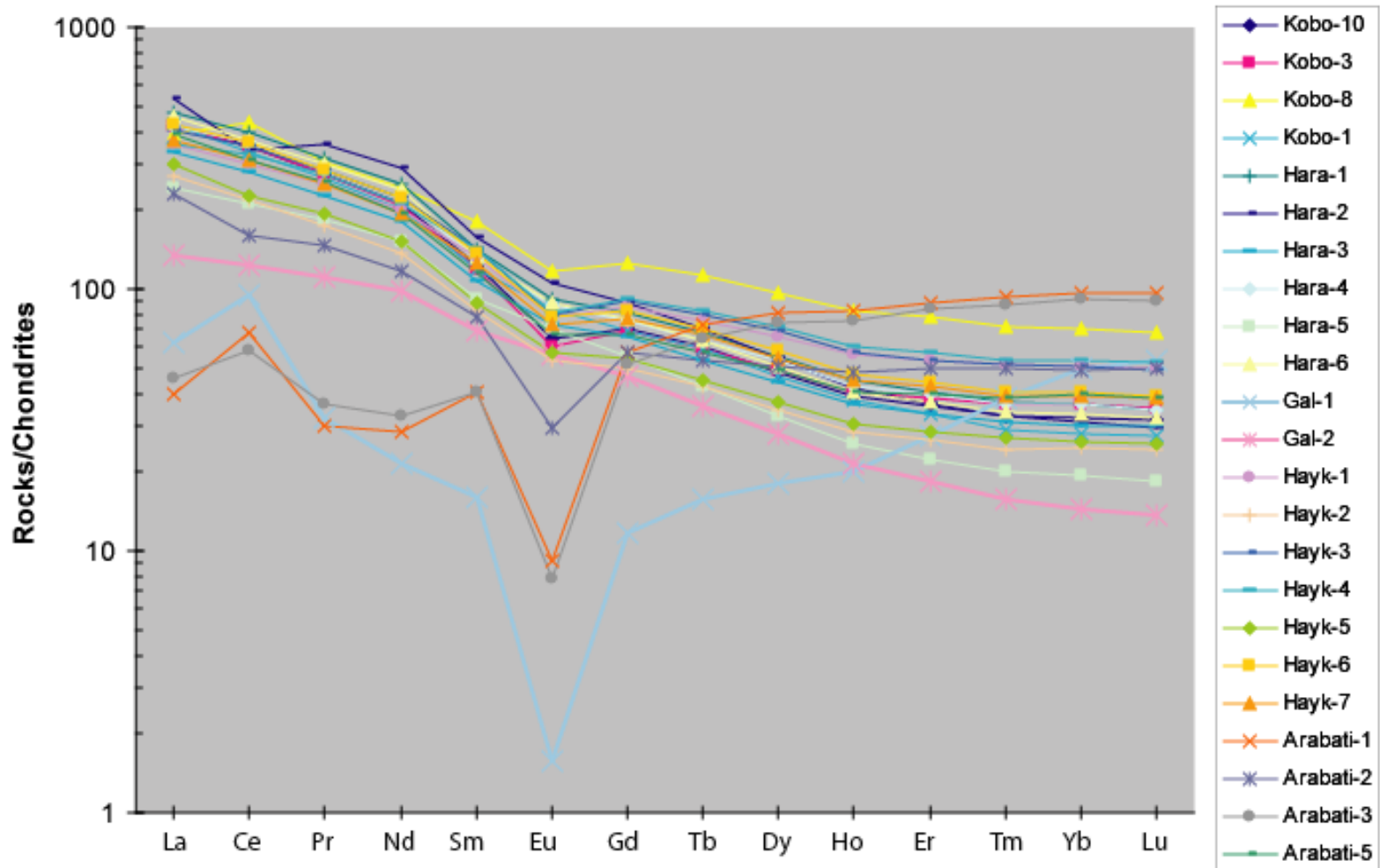


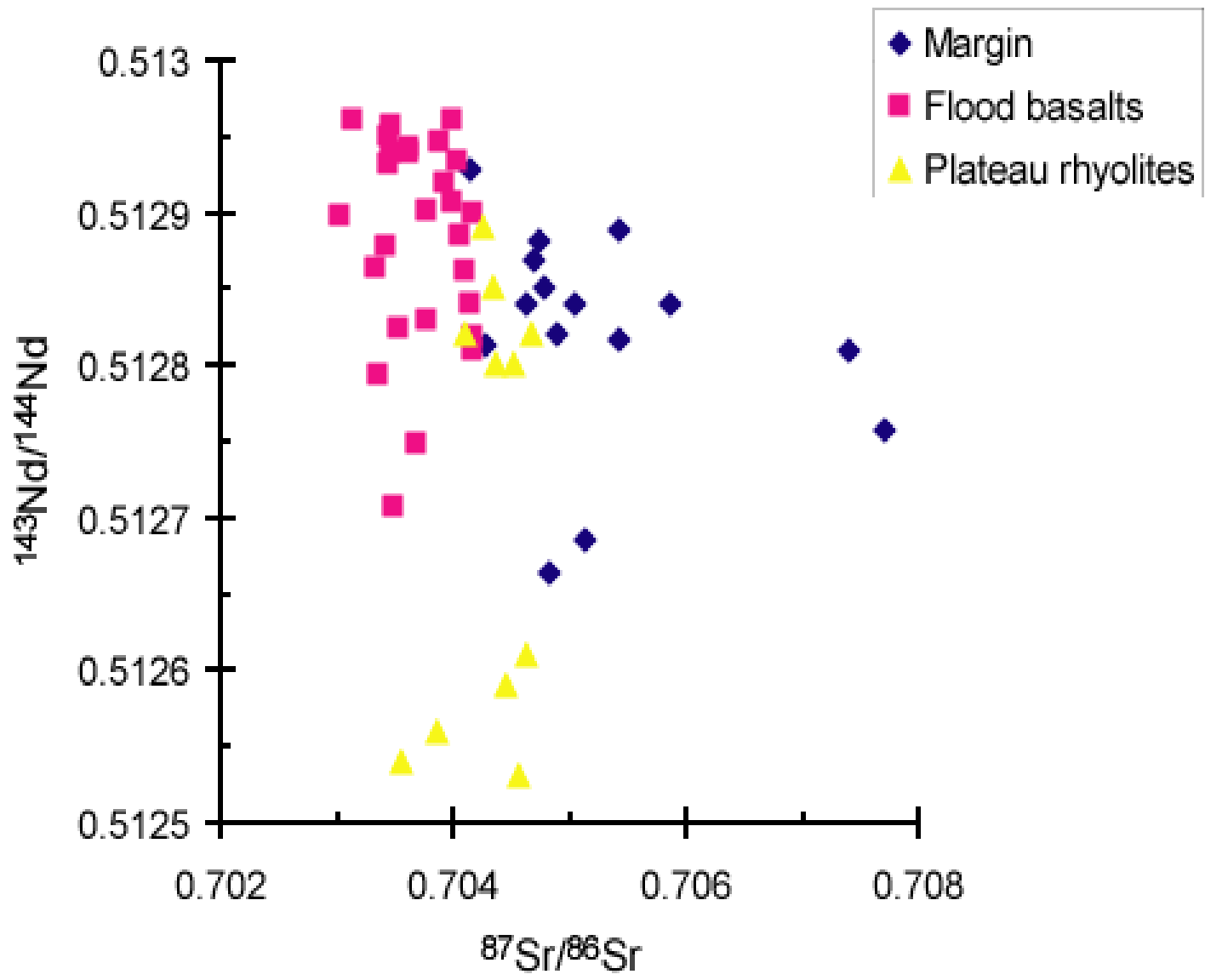


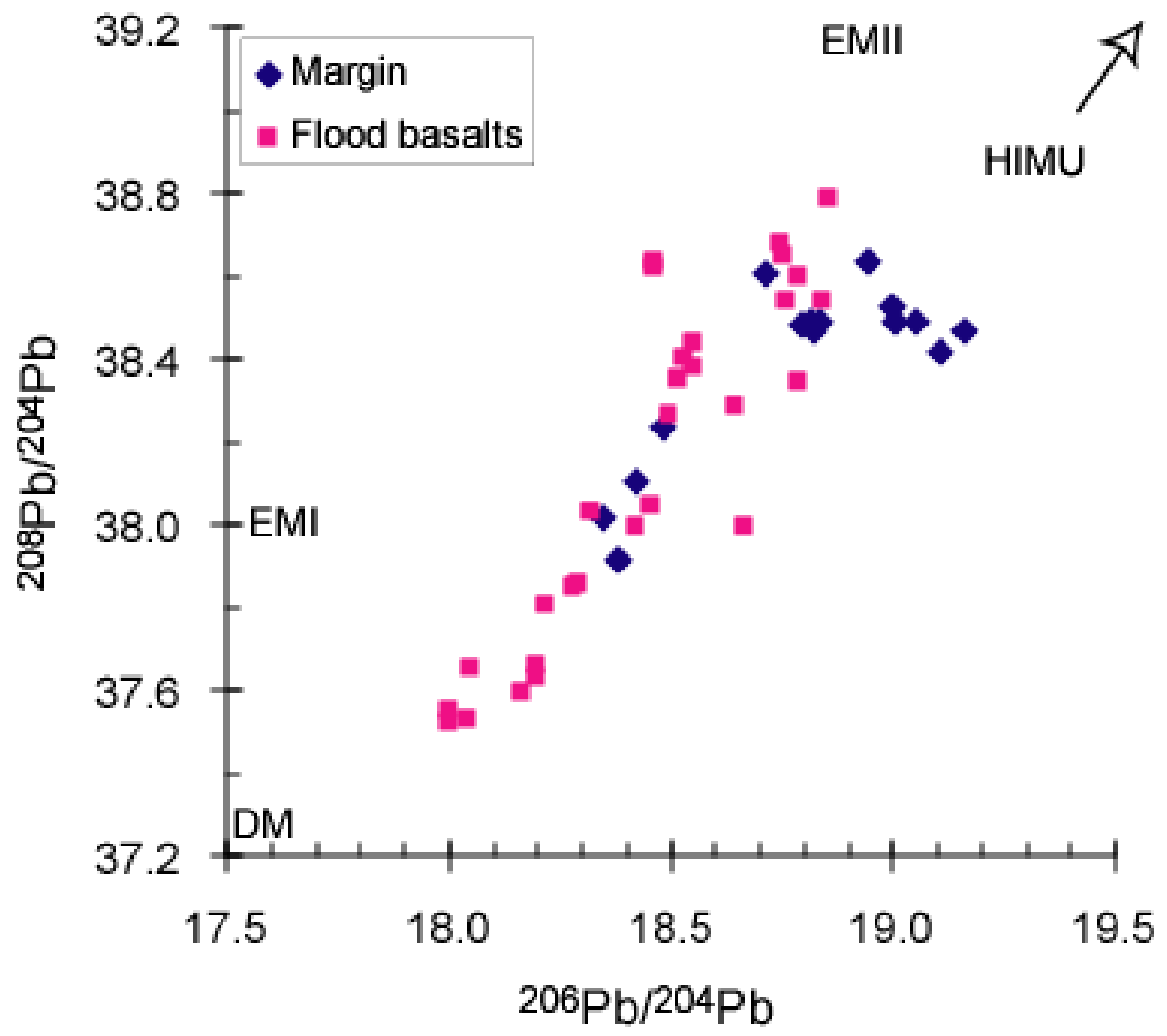
Multi-element variation diagram



REE patterns







Summary

- Homogeneous signature from Oligocene pre-rift CFBs to to the incipient spreading magmatic segments
 - long-lasting melting of discrete portions of mantle over the plume head (plume material +/- lithosphere)
 - segmentation of the margins are inherited from the very early stages of continental break-up